



YAMAHA FRP BOATS

UTILITY series

W-14CH W-16EH-1 W-17AH W-18EF W-19FH W-19GF W-20CF-5 W-20PH
W-23CF W-23PH W-25CF W-25DH W-27HF W-30DF W-32AF W-35CF W-38CF-3



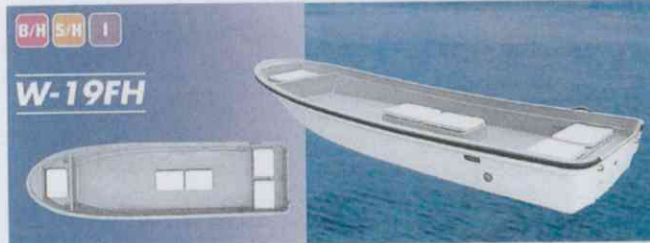
All these here are made in Japan.



LoA (m)	4.22	CAPACITY (person)	4
BoA (m)	1.51	TRANSOM HEIGHT	L
DoA (m)	0.63	MAX HP (manual)	15
HULL WEIGHT (kg)	180	MAX HP (remote control)	-
LOADING CAPACITY (kg)	400		



LoA (m)	4.82	CAPACITY (person)	4
BoA (m)	1.52	TRANSOM HEIGHT	L
DoA (m)	0.65	MAX HP (manual)	20
HULL WEIGHT (kg)	200	MAX HP (remote control)	-
LOADING CAPACITY (kg)	500		



LoA (m)	5.61	CAPACITY (person)	5
BoA (m)	1.68	TRANSOM HEIGHT	L
DoA (m)	0.66	MAX HP (manual)	30
HULL WEIGHT (kg)	336	MAX HP (remote control)	-
LOADING CAPACITY (kg)	514		



LoA (m)	5.82	CAPACITY (person)	5
BoA (m)	1.68	TRANSOM HEIGHT	L
DoA (m)	0.67	MAX HP (manual)	30
HULL WEIGHT (kg)	340	MAX HP (remote control)	-
LOADING CAPACITY (kg)	650		



LoA (m)	7.12	CAPACITY (person)	7
BoA (m)	1.80	TRANSOM HEIGHT	L
DoA (m)	0.70	MAX HP (manual)	40
HULL WEIGHT (kg)	400	MAX HP (remote control)	-
LOADING CAPACITY (kg)	1,000		



LoA (m)	7.02	CAPACITY (person)	8
BoA (m)	2.00	TRANSOM HEIGHT	L
DoA (m)	0.78	MAX HP (manual)	60
HULL WEIGHT (kg)	551	MAX HP (remote control)	-
LOADING CAPACITY (kg)	1,019		



LoA (m)	8.04	CAPACITY (person)	11
BoA (m)	2.24	TRANSOM HEIGHT	X
DoA (m)	0.85	MAX HP (manual)	60
HULL WEIGHT (kg)	750	MAX HP (remote control)	100
LOADING CAPACITY (kg)	1,450		



LoA (m)	9.05	CAPACITY (person)	13
BoA (m)	2.35	TRANSOM HEIGHT	X
DoA (m)	0.86	MAX HP (manual)	70
HULL WEIGHT (kg)	905	MAX HP (remote control)	175
LOADING CAPACITY (kg)	1,875		



LoA (m)	11.40	CAPACITY (person)	40
BoA (m)	3.11	TRANSOM HEIGHT	U
DoA (m)	1.10	MAX HP (manual)	-
HULL WEIGHT (kg)	2,165	MAX HP (remote control)	300
LOADING CAPACITY (kg)	4,217	Console&Steering:Option	

●STANDARD EQUIPMENT

B/H BOW HATCH S/H STERN HATCH I FISH HOLD

YAMAHA FRP BOATS UTILITY series

B/H S/H I

W-17AH



LoA (m)	5.20	CAPACITY (person)	5
BoA (m)	1.64	TRANSOM HEIGHT	L
DoA (m)	0.65	MAX HP (manual)	30
HULL WEIGHT (kg)	260	MAX HP (remote control)	40
LOADING CAPACITY (kg)	540		

B/H S/H I

W-18EF



LoA (m)	5.42	CAPACITY (person)	5
BoA (m)	1.70	TRANSOM HEIGHT	L
DoA (m)	0.72	MAX HP (manual)	25
HULL WEIGHT (kg)	280	MAX HP (remote control)	-
LOADING CAPACITY (kg)	460		

B/H S/H I

W-20CF-5



LoA (m)	6.20	CAPACITY (person)	6
BoA (m)	1.82	TRANSOM HEIGHT	L
DoA (m)	0.66	MAX HP (manual)	40
HULL WEIGHT (kg)	346	MAX HP (remote control)	-
LOADING CAPACITY (kg)	854		

B/H S/H I

W-20PH



LoA (m)	6.20	CAPACITY (person)	6
BoA (m)	1.95	TRANSOM HEIGHT	L
DoA (m)	0.74	MAX HP (manual)	50
HULL WEIGHT (kg)	474	MAX HP (remote control)	-
LOADING CAPACITY (kg)	818		

B/H S/H I

W-25CF



LoA (m)	7.67	CAPACITY (person)	11
BoA (m)	2.50	TRANSOM HEIGHT	L
DoA (m)	0.85	MAX HP (manual)	75
HULL WEIGHT (kg)	714	MAX HP (remote control)	115
LOADING CAPACITY (kg)	1,686		

B/H S/H I

W-25DH



LoA (m)	7.51	CAPACITY (person)	9
BoA (m)	2.05	TRANSOM HEIGHT	L
DoA (m)	0.80	MAX HP (manual)	60
HULL WEIGHT (kg)	610	MAX HP (remote control)	100
LOADING CAPACITY (kg)	1,190		

B/H S/H I

W-32AF



LoA (m)	9.61	CAPACITY (person)	15
BoA (m)	2.55	TRANSOM HEIGHT	X
DoA (m)	0.87	MAX HP (manual)	90
HULL WEIGHT (kg)	1,050	MAX HP (remote control)	180
LOADING CAPACITY (kg)	2,340		

B/H S/H I

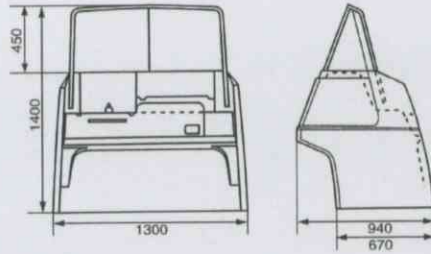
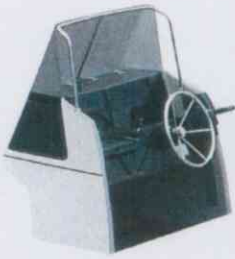
W-35CF



LoA (m)	10.55	CAPACITY (person)	17
BoA (m)	2.81	TRANSOM HEIGHT	X
DoA (m)	1.06	MAX HP (manual)	100
HULL WEIGHT (kg)	1,650	MAX HP (remote control)	300
LOADING CAPACITY (kg)	3,276		



OPTIONAL EQUIPMENT (STEERING CONSOLE BOX)



*This is suitable for big boat (more than 25ft).

*Steering wheel, meters, remote control box and switch panel are not included.

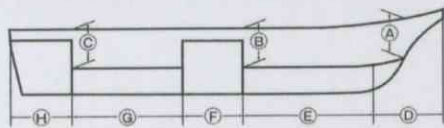
SPECIFICATIONS

	W-14CH	W-16EH-1	W-17AH	W-18EF	W-19FH	W-19GF	W-20CF-5	W-20PH	W-23CF	W-23PH	W-25CF	W-25DH	W-27HF	W-30DF	W-32AF	W-35CF	W-38CF-3
FLOOR	●	●	●	●	●	●	●	●	●	●	●	●	●	●	●	●	●
BOW HATCH	1	1	1	1	1	1	1	1		1	1	1	1	1			1
STERN HATCH	2	2	2	2	2	2	2	3	2	2	2	3	3	3	3	3	3
FISH HOLD	1	1	2		2		2	1		1		2					
HATCH FOR STORAGE								1		2							
BOW EYE	1	1		1	1	1	1		1		1			1	1	1	1
BOW CLEAT								1					1				
MOORING BAR			1							1		1					
STERN EYE	1	2	2	2	2	2	2	2	2	2	2	2	2	2	2	2	2
HULL SCUPPER	2	2	4	2	2	2	4	2	2	4	4	4	4	4	4	4	4
SCUPPER FOR FISH HOLD	2	2	2		2		2	2		2		4					
DRAIN PLUG FOR TRANSOM	2	2	2	2	2		2		2		2	3			3	1	
HAND RAIL	1	1	1	1	1	1	1	1	1	1	1	1	1	1	2	2	2
BATTERY BELT								1	1	1	1	1	1	1	2	2	2
BATTERY CAP								1	1	1	1	1	1	1	2	2	2
TRANSOM PAD	●	●	●		●		●										
CONSOLE BOX	-	-	-	-	-	-	OP	OP	OP	OP	OP	OP	OP	OP	OP	OP	OP

DIMENSIONS

● STANDARD EQUIPMENT OP: OPTIONAL EQUIPMENT - : NOT AVAILABLE FIGURES: NUMBER OF ITEMS

	W-14CH	W-16EH-1	W-17AH	W-18EF	W-19FH	W-19GF	W-20CF-5	W-20PH	W-23CF	W-23PH	W-25CF	W-25DH	W-27HF	W-30DF	W-32AF	W-35CF	W-38CF-3
A (mm)	380	390	350	530	390	430	380	400	490	420	410	460	410	500	490	590	650
B (mm)	370	330	350	460	330	390	330	400	430	400	420	380	410	420	410	480	540
C (mm)	350	320	380	460	330	430	330	400	400	400	450	460	520	510	490	590	600
D (mm)	820	1,030	1,020	970	770	880	1,260	1,300	1,100	1,380	1,070	1,420	1,530	1,270	1,270	1,470	1,580
E (mm)	1,070	1,080	1,540	↑	1,720	↑	1,870	1,620	↑	2,530	↑	3,020	↑	↑	↑	↑	6,080
F (mm)	670	1,020	700	3,610	1,320	4,120	660	1,020	5,220	660	5,620	650	5,350	6,560	7,060	7,780	1,680
G (mm)	910	900	1,010	↓	880	↓	1,500	1,190	↓	1,430	↓	1,220	↓	↓	↓	↓	540
H (mm)	710	770	870	830	770	800	850	1,010	800	1,030	920	1,110	1,120	1,120	1,100	1,190	1,400



- Product improvements may cause changes in specification without notice.
- Limitations in photography and printing may cause product color to appear slightly different from the actual product.
- Some photos include optional equipment.
- Please read the instruction manual thoroughly before attempting to operate your new Yamaha outboard.

Distributor / Dealer

